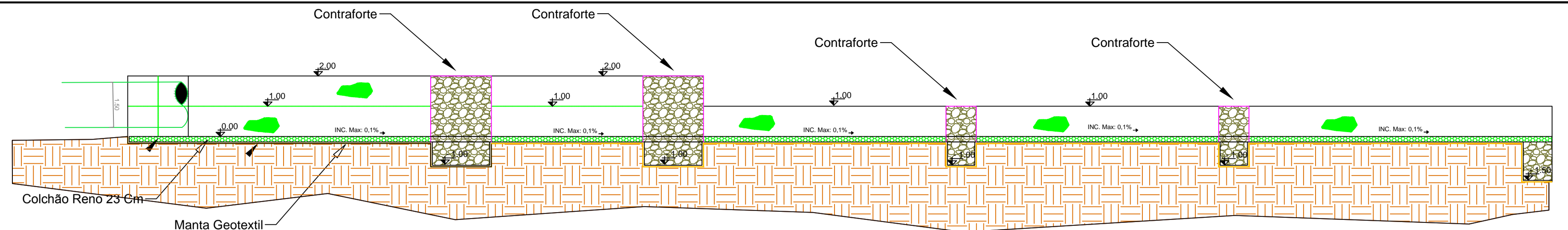
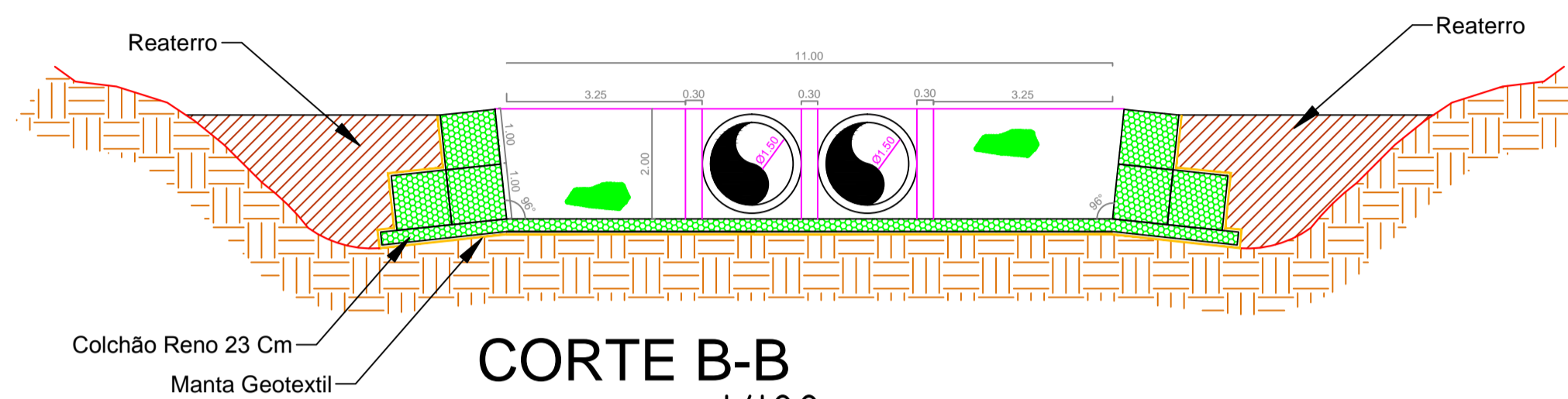


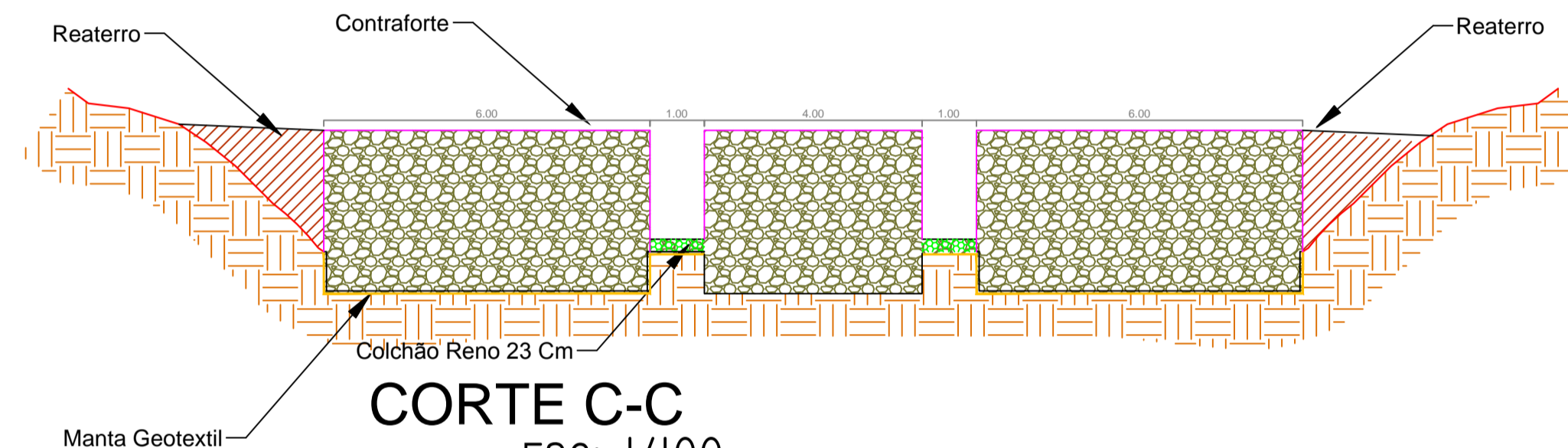
PLANTA BAIXA  
ESC: 1/100



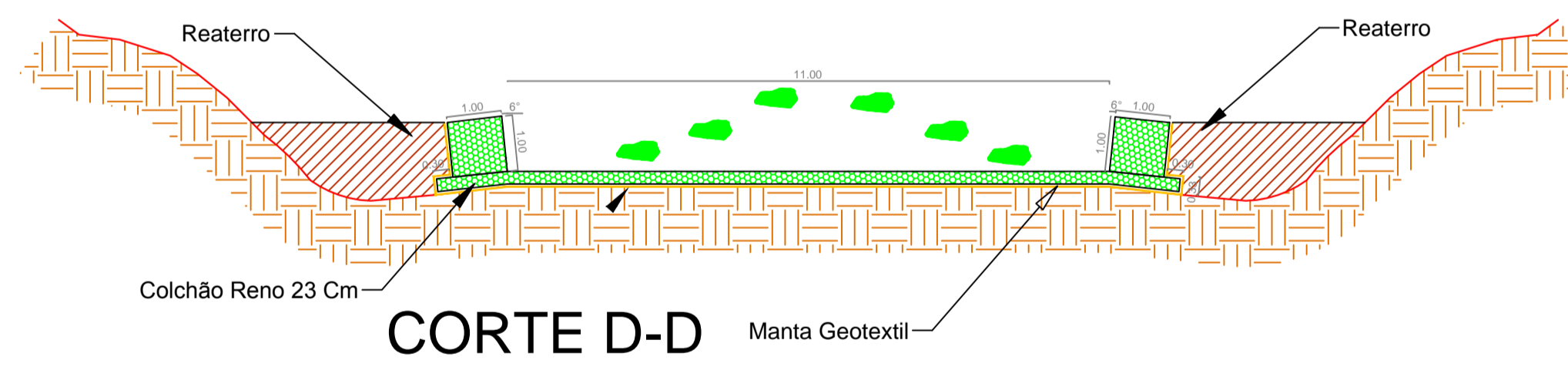
CORTE A-A  
ESC: 1/100



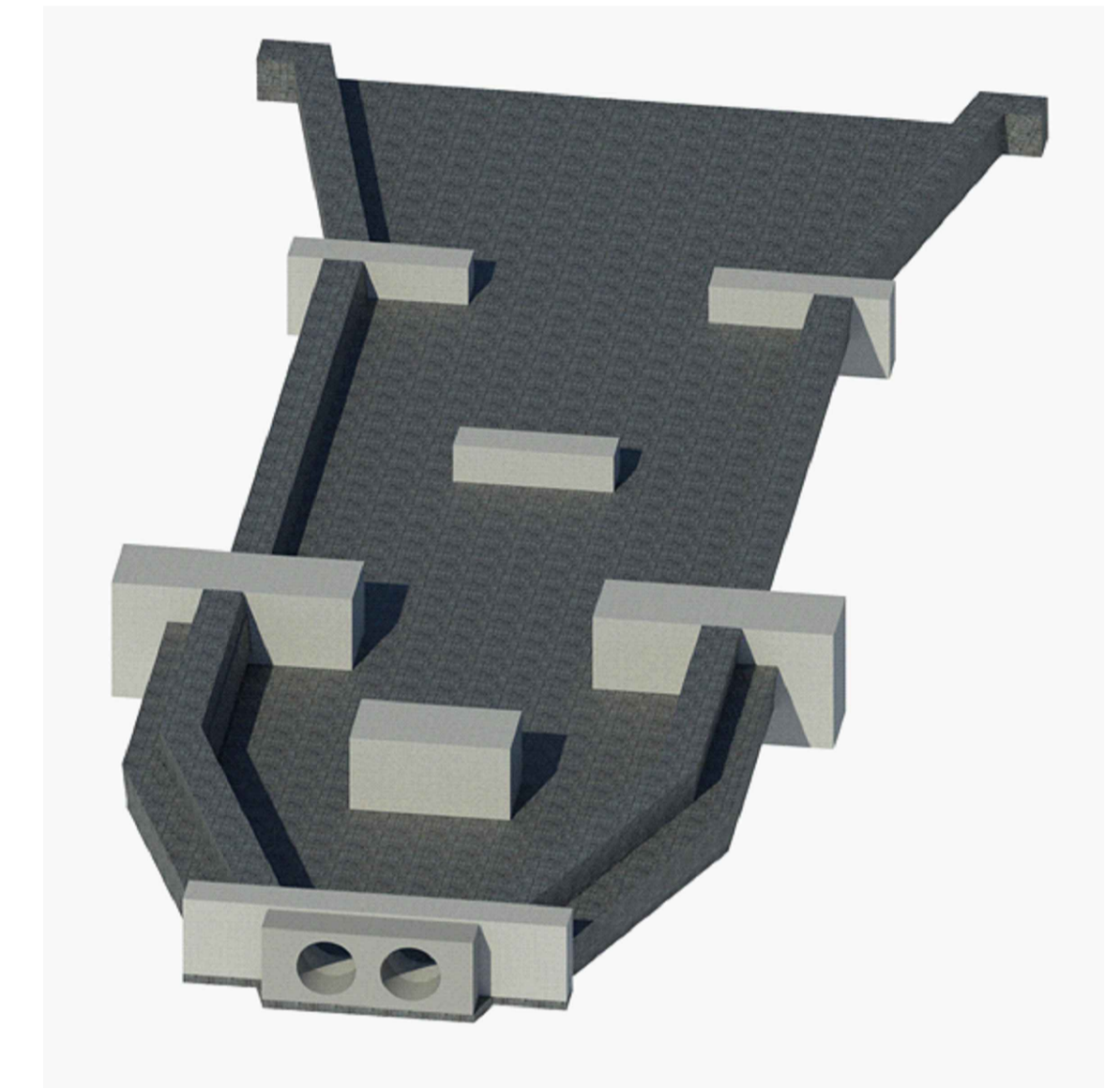
CORTE B-B  
ESC: 1/100



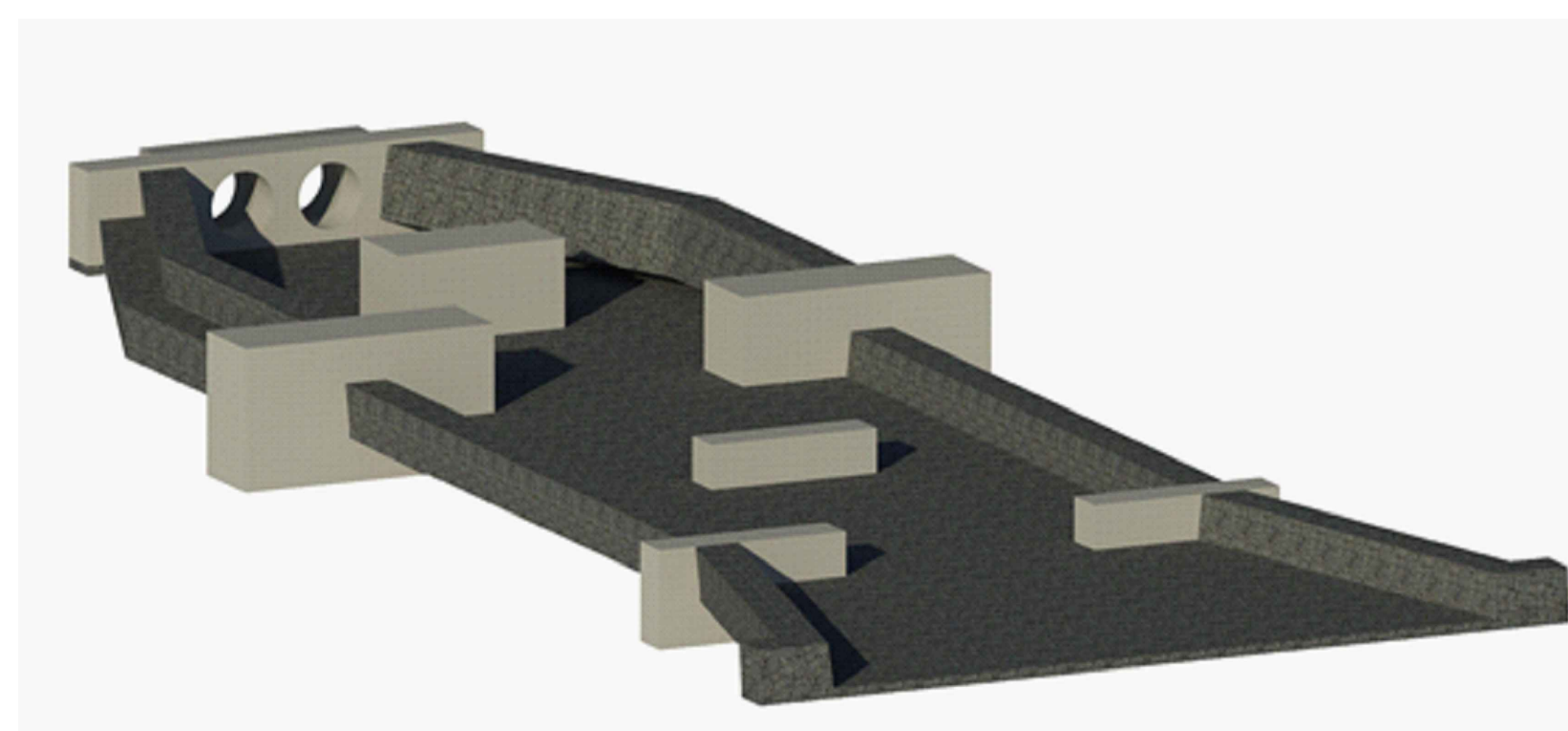
CORTE C-C  
ESC: 1/100



CORTE D-D  
ESC: 1/100



PERSPECTIVA 02



PERSPECTIVA 01

PALMAS - TO		
TAQUARI - QD T30		
REDE 22 (T30-T31) PROJETO GABIÃO		
REVISÃO 01 04 DE FEVEREIRO DE 2019		AUTOR DESENHO: JOSIAS BORGES FONE: (63) 9955-3395  ESCALA: INDICADAS
CONTEÚDO:  PLANTA DE DETALHAMENTO DISSIPADOR E GABIÃO CORTE LONGITUDINAL CORTE TRANSVERSAIS		APROVAÇÃO:  PROPRIETÁRIO(A)  PREFEITURA MUNICIPAL DE PALMAS
AUTOR PROJETO:		RT: JOSIAS ASCYER SANTOS MENDES BORGES ENGENHEIRO CIVIL CREA: 205.093 D/TO
MENDES & BORGES ENGENHARIA LTDA-ME ENG. CIVIL E TEC. EM AGRIMENSURA JOSIAS ASCYER BORGES CREA: 205.093 D/TO CNPJ: 17.342.273/0001-17 (63) 9 9955-3395 / JOSIAS@MENDESORGES.COM (63) 9 9953-1513 / MARCELO@MENDESORGES.COM		

